

Eye nut – RUD RM, UNC



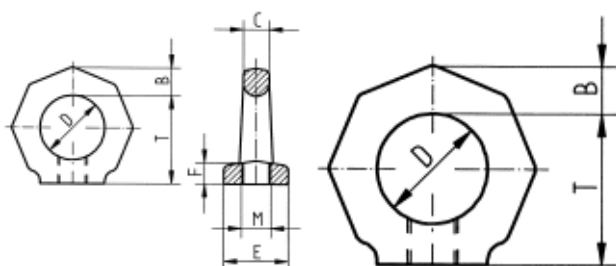
RM eye nut is primarily intended for straight lifting. It is important that the surface under the nut is flat with the base, that 100% of the threads are engaged, and that the nut is properly tightened. The bolt quality must be at least CL 8.8. For angle lifting, the VRM eye nut is recommended.



Material	Herdet og temperert stål
----------	--------------------------

Surface treatment	Paintet
-------------------	---------

Model	RM
-------	----



Read more about the product here:

<https://john-dahle.no/product?number=0218710VM>