

Insulated blank swivel – Yoke BSI

nøstet &

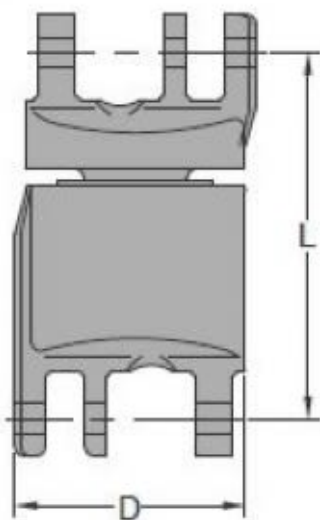
Insulated swivel individually tested to 1000 volts with test certificate. Designed to protect overhead cranes during welding on suspended loads.

The Yoke BSI insulated ballbearing swivel is engineered to provide electrical insulation between lifting equipment and suspended loads. Each unit is individually tested to withstand 1000 volts and supplied with a test certificate, ensuring verified electrical protection during critical operations.

It is specifically designed to prevent electrical transfer to overhead cranes during welding activities performed on suspended loads, enhancing operational safety in industrial environments. The integrated ballbearing swivel mechanism ensures smooth and controlled rotation under load.

The product is tested according to NSEN 1677, and supplied with a 4:1 design factor, fully prooftested and certified.

This makes the Yoke BSI swivel an essential safety component for welding, maintenance, and lifting operations where electrical isolation is required.



Read more about the product here:

<https://john-dahle.no/product?number=0212552VM>