

Sling hook – Crosby G-3315

The Crosby G-3315 snap hook with eye is built for strength and reliability. Made from forged, quenched and tempered carbon steel, with a galvanized body and pressed steel latch. Stainless steel springs, bolts and nuts ensure durability.

Crosby G-3315 is a heavy-duty snap hook designed for versatile use. Forged from quenched and tempered carbon steel for superior strength, with a galvanized finish for corrosion resistance. The latch is made of pressed steel, and all springs, bolts and nuts are stainless steel for long-lasting performance. Complies with ASME B30.10 standard, safety factor 4:1, proof-tested at 2 x WLL. Temperature range: -40°C to +200°C.

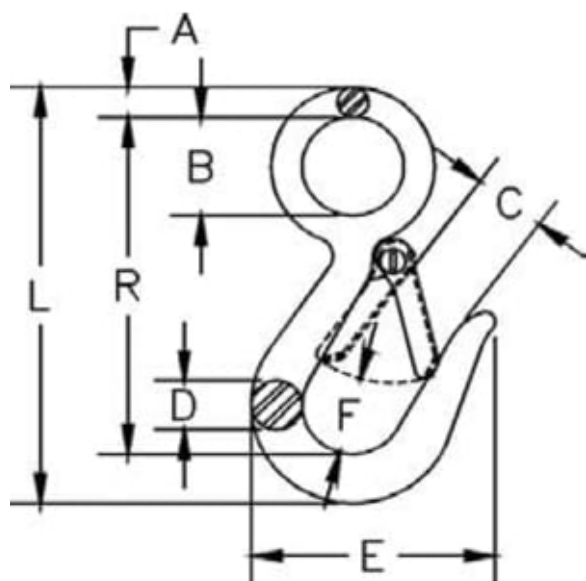


Material	Galvanisert
----------	-------------

Min. temp.	-40°C
------------	-------

Max. temp.	+200°C
------------	--------

Sales unit:	PCS
-------------	-----



Read more about the product here:

<https://john-dahle.no/product?number=VM-0212296>